

Case Studies

Philippa Guest (Dr)

Chair – Haslemere Biodiversity



NATURE RECOVERY IN HASLEMERE - OUR JOURNEY

SNP Biodiversity & Planning Conference

7 March 2026

Philippa J Guest (Dr)
Haslemere Biodiversity



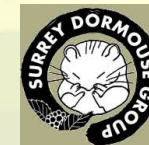
WHO WE ARE

- Voluntary group, not for profit, limited by guarantee.
- Mission: To develop policies, plans and partnerships to protect, restore and enhance Haslemere's rich biodiversity for wildlife and people in perpetuity.
- We want to build on the excellent nature conservation work in progress locally; creating a platform for sharing ideas, expertise and best practice and promoting a common approach that maximises benefits to wildlife.

WORKING IN
COLLABORATION
WITH:

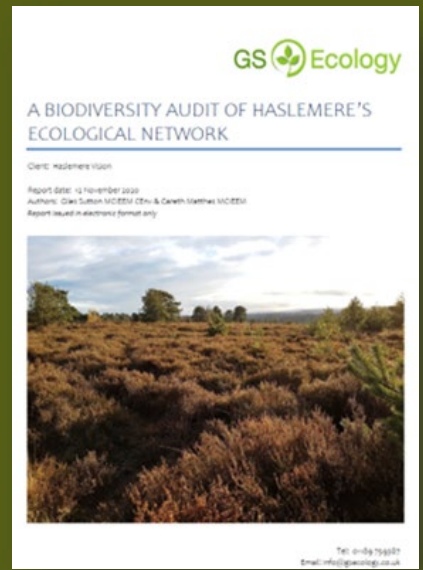
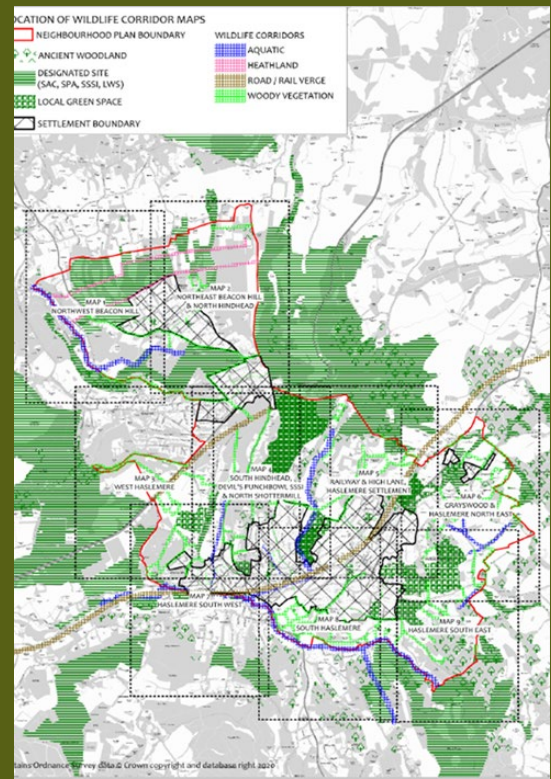


LOB'S
CHARITY



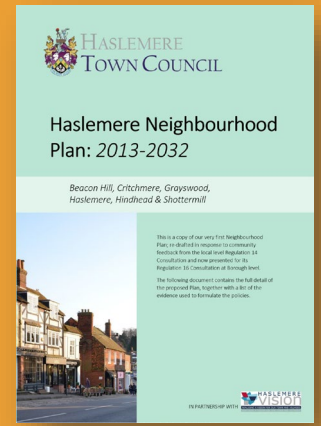
WHAT WE DO (1)

Map and survey the Haslemere Ecological Network (HEN)



Environmental policies

- Embedded in Neighbourhood Plan (Nov 2021)
- Guides planning and development decisions



Haslemere Nature Recovery Strategy

- Identifies opportunities, priorities & measures for nature recovery and provides a framework for action
- Delivered via projects/ partnerships
- Aligned with SCC's LNRS
- Community consultation – May-June '26

WHAT WE DO (2)

Mini-projects: examples

Dormouse monitoring in Grayswood

*With local landowners,
Surrey Dormouse Group &
volunteers*

Photo credit: Kathryn Killner, SDG



River Wey Water Vole recovery project

*With the National Trust,
River Wey Trust, River
Wey Landscape
Partnership & volunteers*

Wildlife friendly gardening

*With SWT, community
groups and local residents*



Wildflower verges to boost insect pollinators

*With Buglife, National
Trust, Haslemere Town
Council & volunteers*

WHAT WE DO (3)

Mini-projects: new!

Swift recovery project

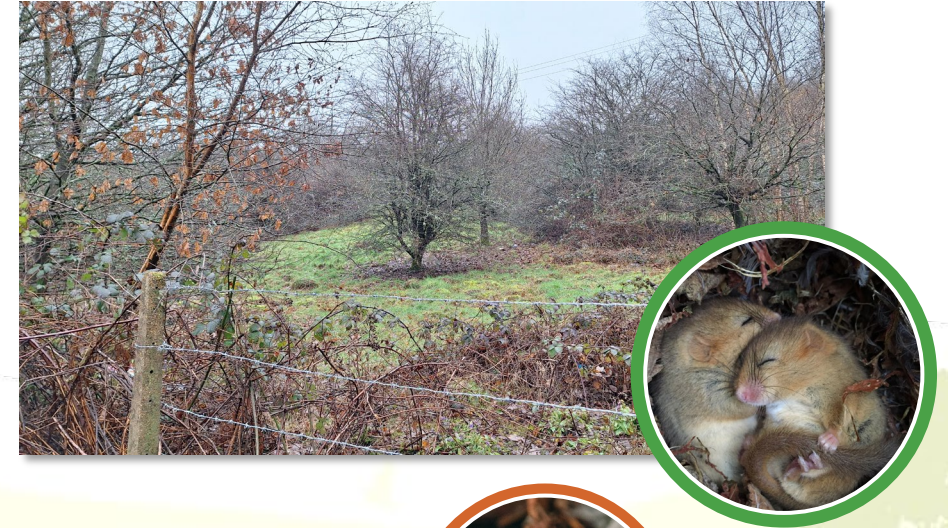


 Hampshire Swifts

*With Hampshire Swifts,
the Guildford Swift
Project, SWT, SCC &
volunteers*



Firecrest Copse Community biodiversity reserve



*With Thames
Water, SWT &
volunteers*



WHAT WE DO (4)

Outreach and recruitment

Communication and outreach

Raise awareness of local biodiversity issues, build dialogue & partnership with key stakeholders & promote community engagement.

Website, social media, newsletters, publications, events...)



Recruitment and training of volunteers + citizen scientists

Partnership with SWT brings valuable expertise, experience & resources.





KEY LEARNINGS



- Team skill set
- Seed funding at outset
- Biodiversity audit + HNRS
- Mini-projects
- Partnerships



- Funding
- Volunteer time / availability / management
- Planning applications & Inquiries

THANK YOU!

